

## **Brant Flyers RC MAAC Directive**

Brant Flyer is made up of 2 flying fields located in the County of Brant. One is located in the town of Etonia and the other Middleport. I have included drawings for both fields, and answered the quest that MAAC required. I hope the submitted information will enable us to get back to a flying state.

1. What categories of MAAC operations that are permitted at the Club or site? RPAS, Control Line, Free Flight, Space Models (rockets), or surface vehicles. *Brant Flyers operates RPAS, Control Line, Free Flight, Drones and some helicopters*
2. Accurate GPS coordinates of center pilot stations, including the road access if different. *GPS coordinates are supplied on the attached drawings as well as here. (Etonia 43° 10' 10.8"N 80° 28 '4" W) (Middleport 43° 06' 16.6" N 80° 03'41" W)*
3. The total flying area definition – length, width, and depth. *Etonia Flying area is approx. 500m x100m Middleport area is approx. 400m x 1000m*
4. List any “requested” altitude limits. Already issued waivers are not needed. *Flight is limited to 400'*
5. to Closest Airport & Distance. *Etonia – Brantford 11km, Middleport – Hamilton 13Km*

## Documents required: Club Rules

### ***BRANT FLYERS RC*** **Field Safety and Operation Rules** **Etonia & Middleport**

1. ✖ Field Safety and Operation Rules and Signage shall be adhered to by all Brant Flyers members, visitors and guests. ✖
2. ➔ Flying privileges are restricted to Brant Flyers RC members in good standing. Guests who are MAAC members in good standing may fly at the field on a maximum of two (2) occasions after which they are required to obtain Brant Flyers membership. Prospective members without MAAC membership may undertake a maximum of four (4) familiarization flights under the direct supervision of a Brant Flyers instructor. ➔
3. ➔ Brant Flyers members shall be responsible to ensure that all ground and flight operations are conducted in a safe, conscientious manner. ➔
4. ✖ Vehicles (automotive) shall not be driven onto the flying field and shall be parked only in the designated area(s). ✖
5. ➔ Vehicles (automotive) shall not be driven outside the confines of the flying field without the express permission of the appropriate property owner(s) and/or lessee(s). ➔
6. ✖ Flying is not permitted at such times that any field maintenance is occurring. ✖
7. ➔ Junior members shall not operate grass maintenance equipment unless under the direct supervision of their parent(s). ➔
8. ➔ Flying is not permitted during periods of precipitation. Should precipitation begin during a flight, the model shall be landed as soon as practicable. ➔
9. ✖ Each Brant Flyers member shall be solely responsible for the conduct of their guests/children/pets. ✖
10. ✖ Spectators are not permitted in the pit area unless under the direct supervision of a Brant Flyers member. ✖
11. ✖ Spectators are not permitted to remain in the pit area or at flight stations at such times that flying is in progress unless under the direct supervision of a Brant Flyers member. ✖
12. ✖ Pilots shall comply with all relevant sections of the M.A.A.C. Safety Code in effect at the time of flight and with Brant Flyers Field Safety and Operation Rules. ✖
13. ➔ Flying privileges shall be considered revoked if a current M.A.A.C. and Brant Flyers membership card is not carried. Pilots shall produce their current M.A.A.C., and Brant Flyers membership cards upon request. ➔
14. All fuel powered aircraft are required to comply with Schedule 1. "Engine powered Aircraft Noise Limits".
15. All aircraft are required to comply with Schedule 2. "Aircraft Weight Limits".
16. ✖ If flying 72 MHz, all pilots shall provide an individually identifiable pin to be used on the frequency board. All pilots are encouraged to display the appropriate 72 MHz frequency number on their transmitter antenna when in operation. Spread spectrum pins are to be located on frequency board in the space provided. A maximum of five (5) aircraft may be flown at any one time in accordance with MAAC safety regulations. ✖
17. ✖ Prior to turning on any transmitter, each pilot's frequency pin shall be placed on the frequency board on the correct channel location. If another pin already covers this channel number, it shall not be removed until the owner of the pin removes it or it is determined that the owner is no longer at the field and that the frequency is not in use. Special care shall be taken by the owners of frequency synthesized transmitters to ensure that their identified operating channel is correctly selected. ✖
18. ✖ Pilots shall stand behind Flight Stations to fly their aircraft unless M.A.A.C. rules for a particular discipline otherwise dictate. The sole exception to this rule is when no other aircraft are airborne. In this situation, the pilot shall inform all other pilots of his/her intent and must also have their consent to stand on the field. Once the aircraft is airborne, the pilot shall promptly relocate to a flight station in the event that other aircraft become airborne. ✖

19. ✖ Aircraft may be taxied directly out of the start-up area. Upon taxiing to return the plane to the pit area, the aircraft shall be turned away from the pits prior to reaching the flight station line and the engine or motor shut down. ✖
20. ✖ Members and/or guests shall not proceed beyond the flight line except to retrieve an aircraft or to position an aircraft for take – off. In this situation, the member and/or guest shall inform those pilots currently flying of his/her intent and shall also have their consent to be on the field. ✖
21. ✖ Aircraft shall not be flown over or behind the pit, spectator or car parking areas ✖
22. ✖ Flying shall be restricted to within 200m of the field boundaries at all times. Altitude shall be restricted to at a maximum altitude of 122m (400 feet) without a designated spotter being present to avoid conflict with full size aircraft.. Aircraft shall be so controlled as to remain clear of people, animals, residential property and agricultural equipment at all times. ✖
23. ➔ Instructors shall ensure that trainees do not violate rule number 20 and/or rule number 21. The instructor shall take immediate corrective action in the event that a violation appears imminent. ➔
24. ➔ Students pilots shall not attempt to fly without an instructor until such time they have been certified by an the instructor to fly solo ➔
25. ➔ Any flying guests must be checked out before flying solo their ability ➔
26. ➔ Garbage receptacles are not provided, members shall remove any and all litter generated by their activities ➔
27. ➔ Use of drones is allowed at either field, See field specific rules ➔
28. ➔ Do not leave any garbage at the fields unless it has been placed in a garbage receptacle i.e. pop cans, damaged planes etc.
29. ✖ Violation of the above rules may be grounds for suspension or revocation of membership. ✖

✖ M.A.A.C. RULES ✖ ➔ BRANT FLYERS RC SUPPLEMENTAL RULES ➔

## **Etonia Field Specific Rules**

1. Drones must remain in sight at all times, and FPV goggles are not allowed
2. When accessing the field, a speed of dead slow must be maintained until you past the red barn/work shop. Please remain on the lookout for kids and pets
3. Electric can be flown at anytime
4. Flights must not at any time exceed the treeline to the west of the field
5. When possible departing flights should be made to the east (wind dependant)
6. When departing to the west, turn out to the north should be made as soon as possible when safe to do so.

## **Field Safety Recommendations**

- a. It is recommended that Brant Flyers RC members include a First Aid Kit as part of their field equipment.
- b. It is recommended that aircraft powered by internal combustion engines be suitably restrained during start-up.
- c. Suitable hearing protection is recommended when operating internal combustion engines at close distances.
- d. Suitable eye protection is recommended when danger of injury exists.

## **Hours of Operation**

### **Etonia**

Monday - Saturday: 9:00 am – Dusk

Sunday: 12:00 pm – Dusk

### **Middleport**

Monday - Saturday: 7:00 am – Dusk

Sunday: 10:00 pm – Dusk

## **Schedule 1.**

### **Engine Powered Aircraft Noise Limits**

2 Stroke Glow Engine 30K RPM	101dBA	@ 3m
2 Stroke Glow Engine >15K RPM	98 dBA	@3m
2 Stroke Glow Engine <15K RPM	95 dBA	@3m
2 Stroke Gas Engine >7.5K RPM	101dBA	@3m
2 Stroke Gas Engine <7.5K RPM	98 dBA	@3m
4 Stroke Glow Engine >10K RPM	101 dBaA	@3m
4 Stroke Glow Engine <10K RPM	98 dBA	@3m
Gas Turbine Engine >190,000RPM	110 dBA	@3m

## **Schedule 2.**

### **Aircraft Weight Limits**

<b>Glow Fuel Engine Powered</b>	<b>Maximum Dry Weight</b>	<b>20.0 kg (44.0 lbs)</b>
<b>Gasoline Fuel Engine Powered</b>	<b>Maximum Dry Weight</b>	<b>20.0 kg (44.0 lbs)</b>
<b>Turbine Engine Powered</b>	<b>Maximum Gross Weight</b>	<b>16.0 kg (35.2 lbs)</b>
<b>Electric Powered</b>	<b>Maximum Gross Weight</b>	<b>16.0 kg (35.2 lbs)</b>
<b>Sailplane (Unpowered)</b>	<b>Maximum Gross Weight</b>	<b>10.0 kg (22.0 lbs)</b>

**Note:**

Weight limits shown are lower than the MAAC/Transport Canada limit of 35.0 kg (77.0 lbs) for all classes of model aircraft.

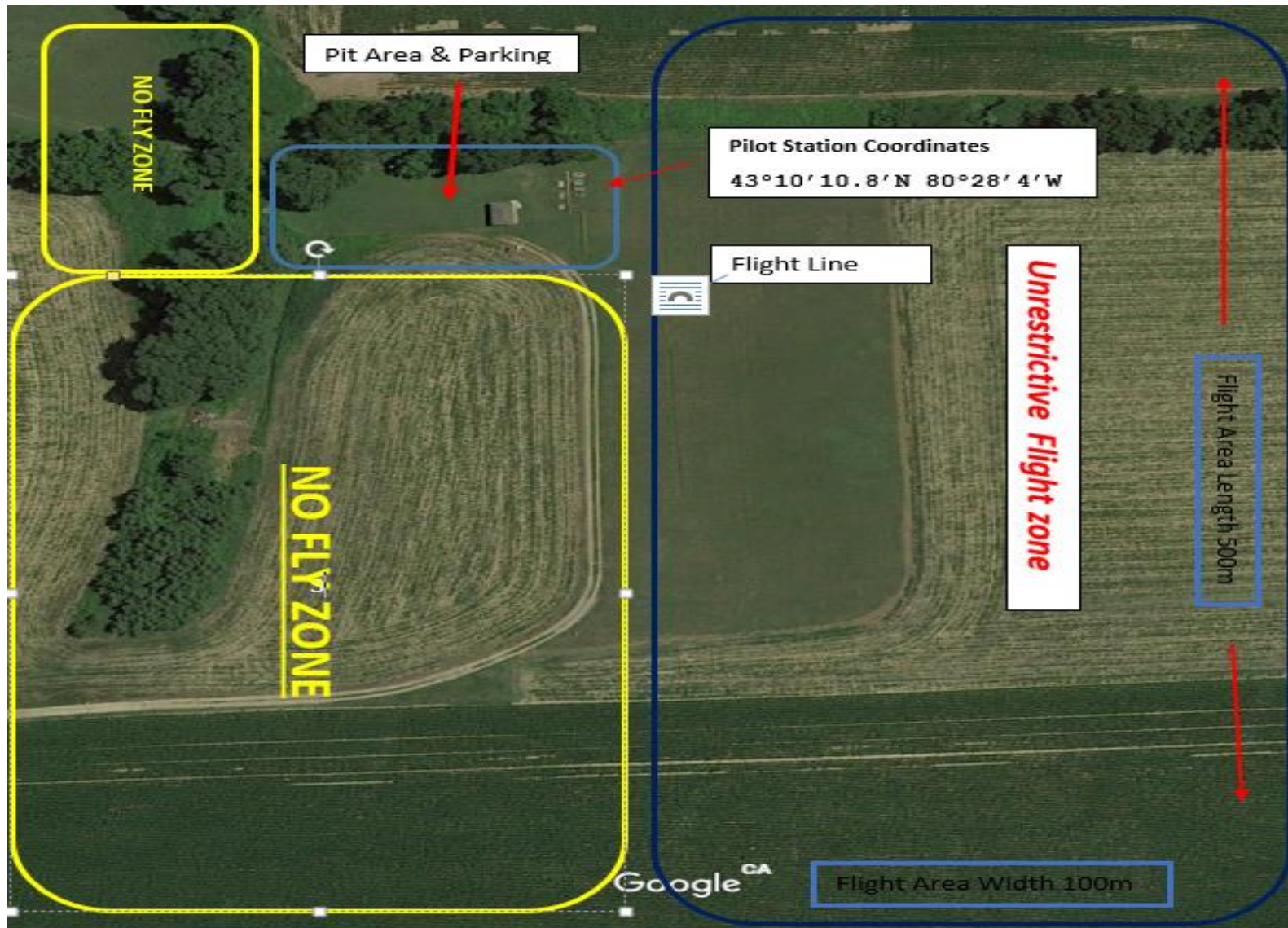
## *Brant Flyers*

### *Etonia Field Layout*



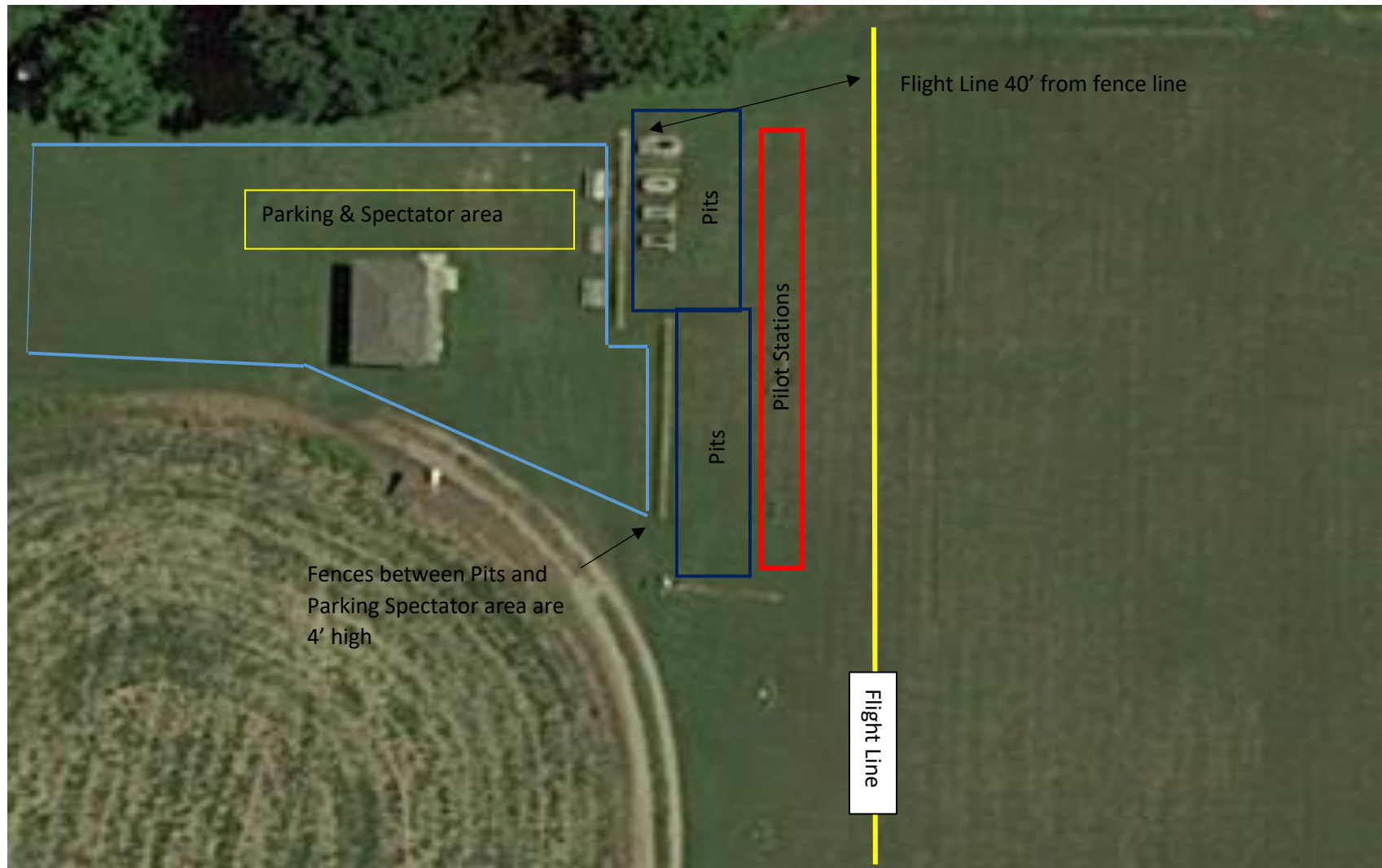


## *Etonia Flight Area Overview*

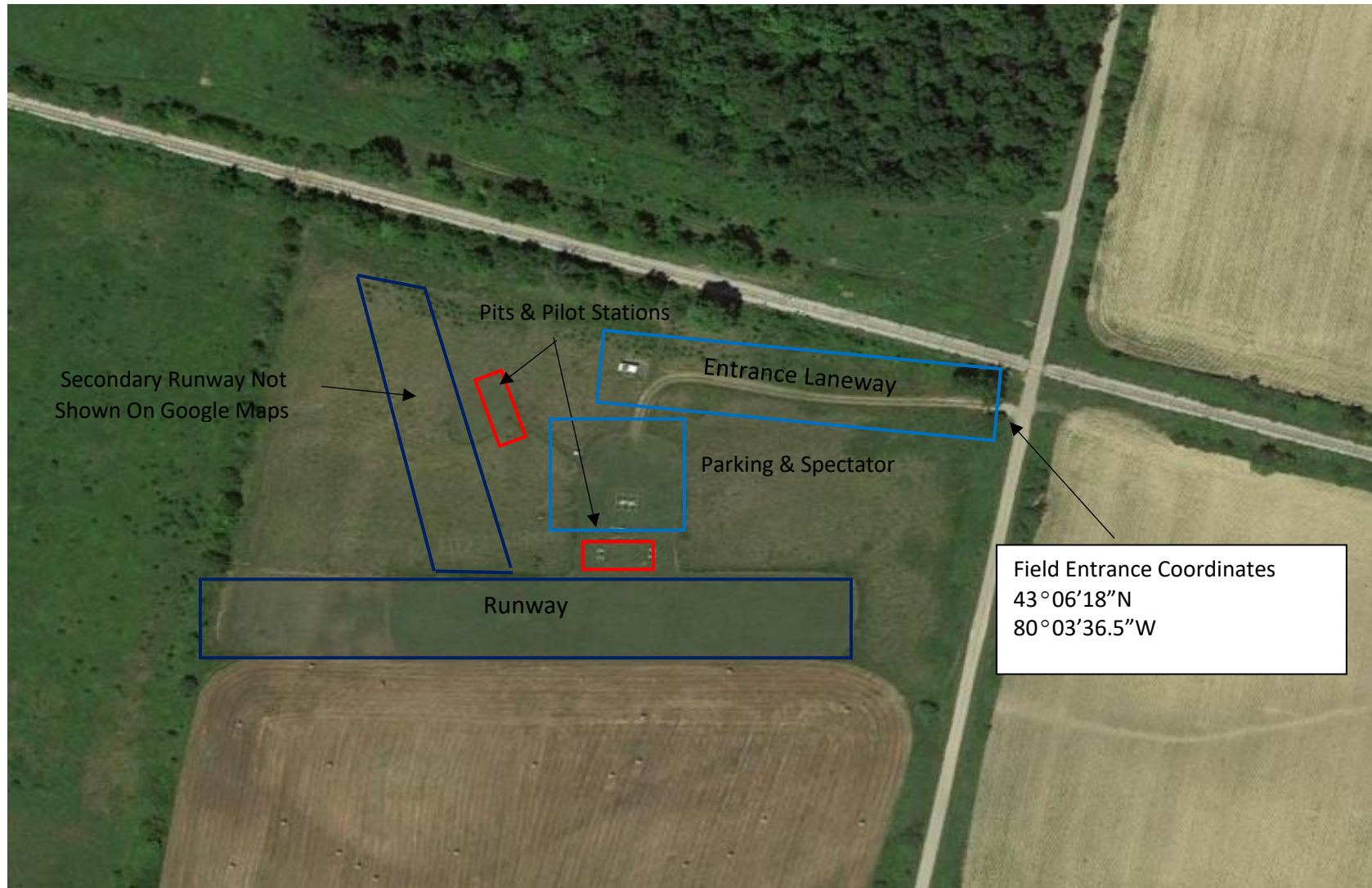




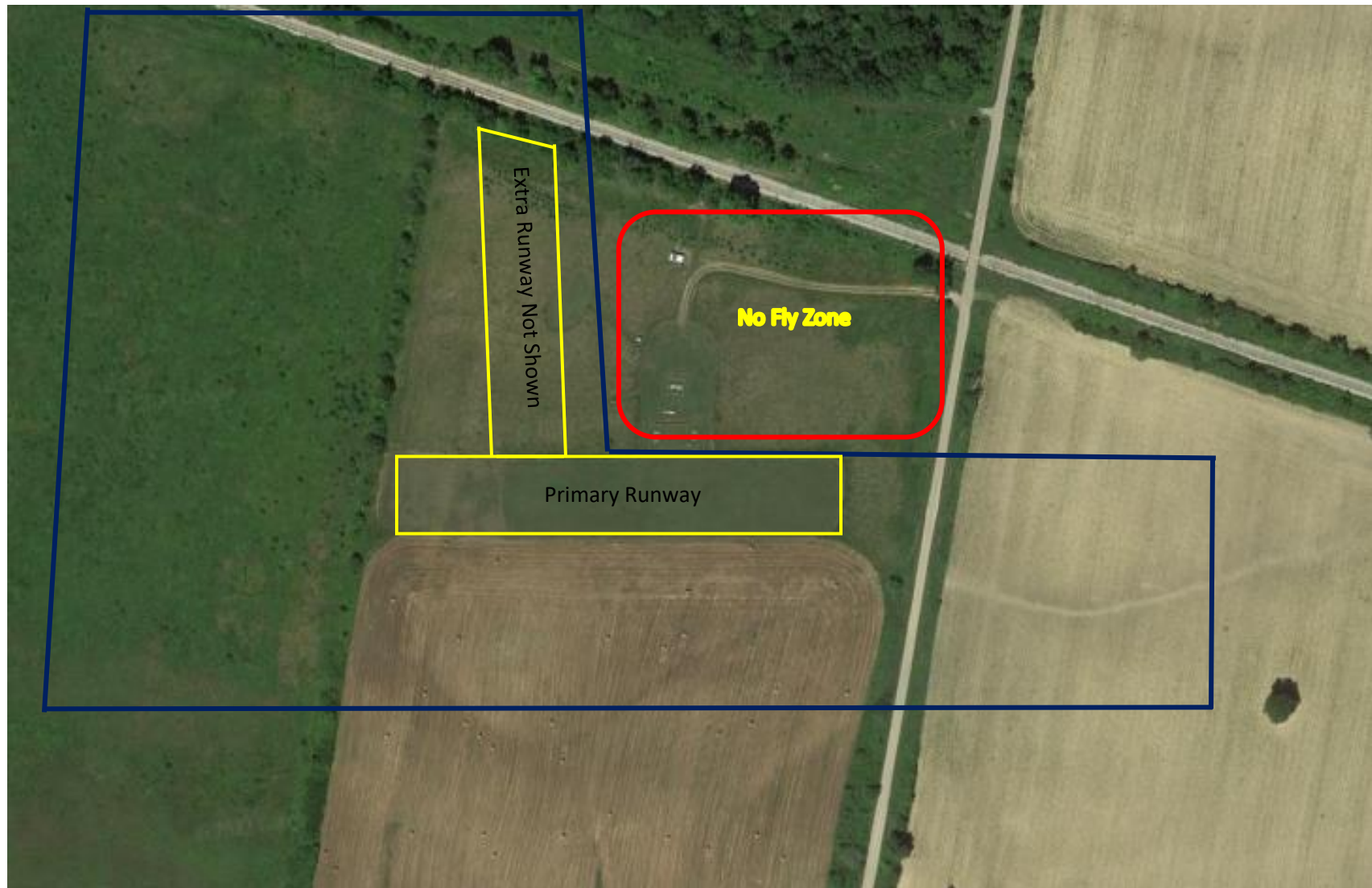
## *Etonia Parking, Pit, Pilot Stations, Flight Line*



## *Middleport Field Overview*

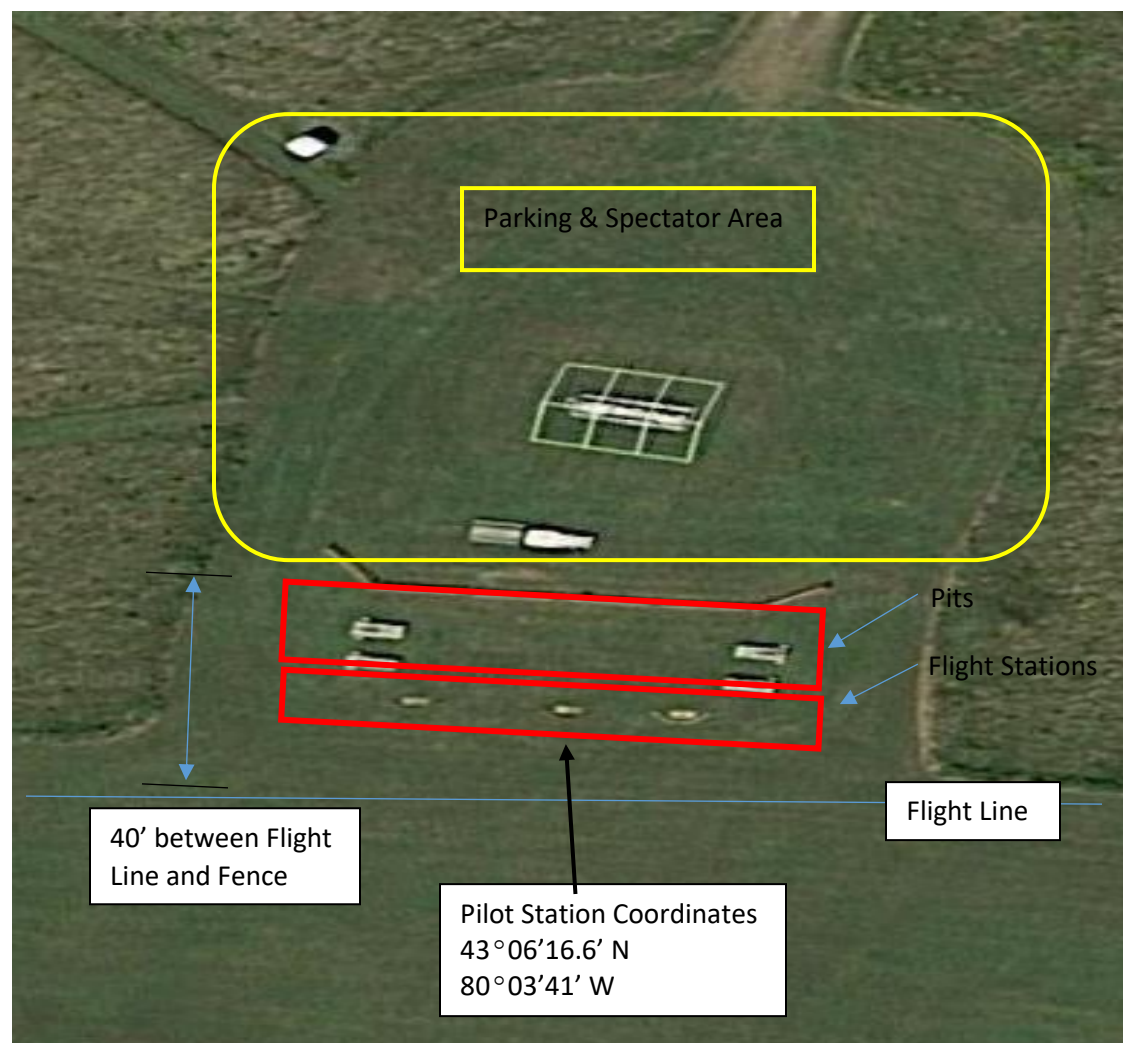


## *Middleport Flight Area Overview*





## *Middleport Parking, Pit, Primary Pilot Stations, Flight Line*



## *Middleport Secondary Pilot Stations, Flight Line*

